

# Town & Country

ESTABLISHED IN 1846

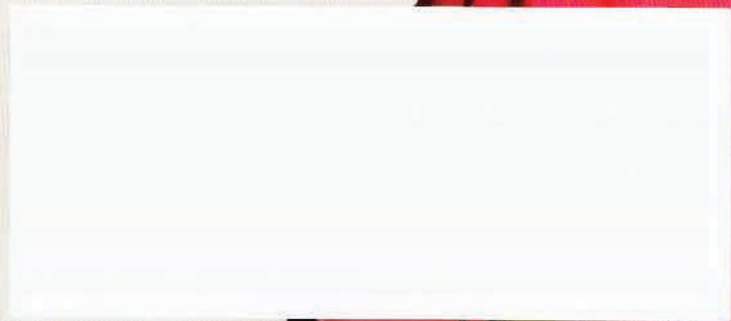
## Think Fall!

Our Ultra-Wearable Fashion Preview

**FILLERS vs. FACE-LIFTS**  
The Needle Wins

**24 HOURS WITH**  
Everybody's Favorite Socialite

Lo  
Lo  
Lo  
**Julianne Moore**  
Moo





**The blue lacquered bar and quartzite countertop; the bar's ceiling, painted by Raymond Goins, an homage to the one in Grand Central Terminal, with an astrological lantern from Visual Comfort.**